

CBK-WA100 / CBK-WA101

Wireless Adapter

SONY

In response to rapidly growing demand for shot content file transfer from field locations, Sony proudly introduces the CBK-WA100 / CBK-WA101 Wireless Adapter to accelerate current workflow. This wireless adapter supports Wi-Fi, 3G/4G, and LTE transmission to meet the needs of any shooting environment, promptly transmitting both proxy data and high-resolution*¹ data. Compatible by design, it connects with mobile devices such as smartphones and tablets*². As well as supporting TV program production in the field, this adapter is an ideal choice for camera professionals engaged in news gathering when speed is the key concern.



*¹ Requires a USB connection. Some models are not supported.

*² Supports Android OS (Version 4.1 and later) and iOS (Version 7).

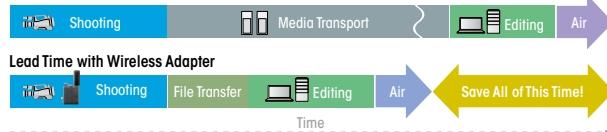
Features

Save Time and Cost

Users can transmit proxy files via Wi-Fi/3G/4G/LTE from field locations immediately after shooting. This gives the considerable advantage of not having to spend extra time and cost physically transporting files, especially when the task is time-critical. Also, it's no problem if the camcorder cannot create proxy data – instead, the wireless adapter can create an XAVC proxy file which is easily handled by general viewer applications. In addition, high-resolution files can be transferred using a USB connection*³.

*³ Some models are not supported.

Lead Time without Wireless Data Transfer



Simple Installation

It's easy to install the adapter to Sony's existing camcorders and decks using BNC and DC power cables. For even simpler connection, the CBK-WA101 is designed especially for the PMW-400, requiring no cable connections of BNC and DC power cables at all, just an easy attach/detach mechanism.

When the wireless adapter is connected to camcorders/decks using a USB cable, users enjoy full features such as file transmission of high-resolution files, remote control, a viewfinder display of the wireless adapter operation status, and further convenient features.

The wireless adapter can be used with the following models:

PMW-500/400/300/200/160/150/50 (with HD-SDI connection and USB connection)

PMW-320, PDW-F800/700/680 (with HD-SDI connection)



Specifications

	CBK-WA100	CBK-WA101
Weight	Approx. 220 g	Approx. 220 g
Dimensions (W x H x D)	84 x 95 x 30 mm without projection	84 x 95 x 55 mm without projection
Power Requirements	DC 12 V	DC 12 V
Power Consumption	4.5W (exclusive of external USB devices)	4.5W (exclusive of external USB devices)
Operating Temperature	0°C to +40°C (+32°F to +104°F)	0°C to +40°C (+32°F to +104°F)
Proxy Format (Video)	XAVC Proxy (AVC/H.264 Main Profile, 4:2:0 Long GOP) - 1280x720, 9M (VBR) - 640x360, 3M (VBR) - 480x270, 1M (VBR)	XAVC Proxy (AVC/H.264 Main Profile, 4:2:0 Long GOP) - 1280x720, 9M (VBR) - 640x360, 3M (VBR) - 480x270, 1M (VBR)
Proxy Format (Audio)	AAC-LC, 2ch, 128kbps for Stereo	AAC-LC, 2ch, 128kbps for Stereo
DC Input	4-pin (male)	-
HD-SDI Input	BNC (x1)	-
USB	USB device mini B Type (x1), for Camcorder host A Type (x2), for Wireless LAN USB Device and 3G/4G/LTE modem	USB device mini B Type (x1), for Camcorder host A Type (x2), for Wireless LAN USB Device and 3G/4G/LTE modem
Recording Media*	SD Card Slot (x1)	SD Card Slot (x1)
Supplied Accessories	Bracket (2) Guard Bracket (1) Guard Cushion (2) DC Cable (1) BNC Cable (1) USB Cable (1) Fixing Screw (5) CD-ROM (incl. Operation Manual) (1) Installation Manual (1) Before Using This Unit (1)	Bracket (2) Guard Bracket (2) Guard Cushion (2) - USB Cable (1) - CD-ROM (incl. Operation Manual) (1) Installation Manual (1) Before Using This Unit (1)

* Support SDHC Class4 and higher (SDXC should not be used, i.e. the maximum capacity is 32GB.)

Items not supplied in the package of Wireless Adapter	
USB dongle*	If you use wireless connection, you need a Wireless LAN USB Device (IEEE 802.11b/g compliant) or a 3G/4G/LTE Modem. Sony Product Wireless LAN USB Device IFU-WLM3 is recommended.
Smartphone or tablet	To view a streaming content, a terminal (a Smartphone or a Tablet) and an application software (Content Browser Mobile) are required. Recommended models : Xperia Z, Xperia Tablet Z and later Xperia models
Application Software (Content Browser Mobile)	Supported OS : Android 4.1 and later
SD media	Need a media compatible with* ¹
Others	Other than the mentioned above, need a system to connect to an On-Premises Server or a Sony's recommended Cloud Service if transferring the file over WAN.

*¹ Requires a third-party contract to transfer files via Wireless LAN/eG/4G/LTE (carrier availability varies in different countries/areas). The file transfer function does not allow simultaneous use of Wi-Fi and 3G/4G/LTE devices. Need a contract to a carrier in order to transfer files via Wireless LAN/3G/4G/LTE. The availability of a Wireless LAN USB Device varies across countries/areas. A Wireless LAN USB Device and a 3G/4G/LTE Modem cannot be used simultaneously for File Transfer function.

Accessories



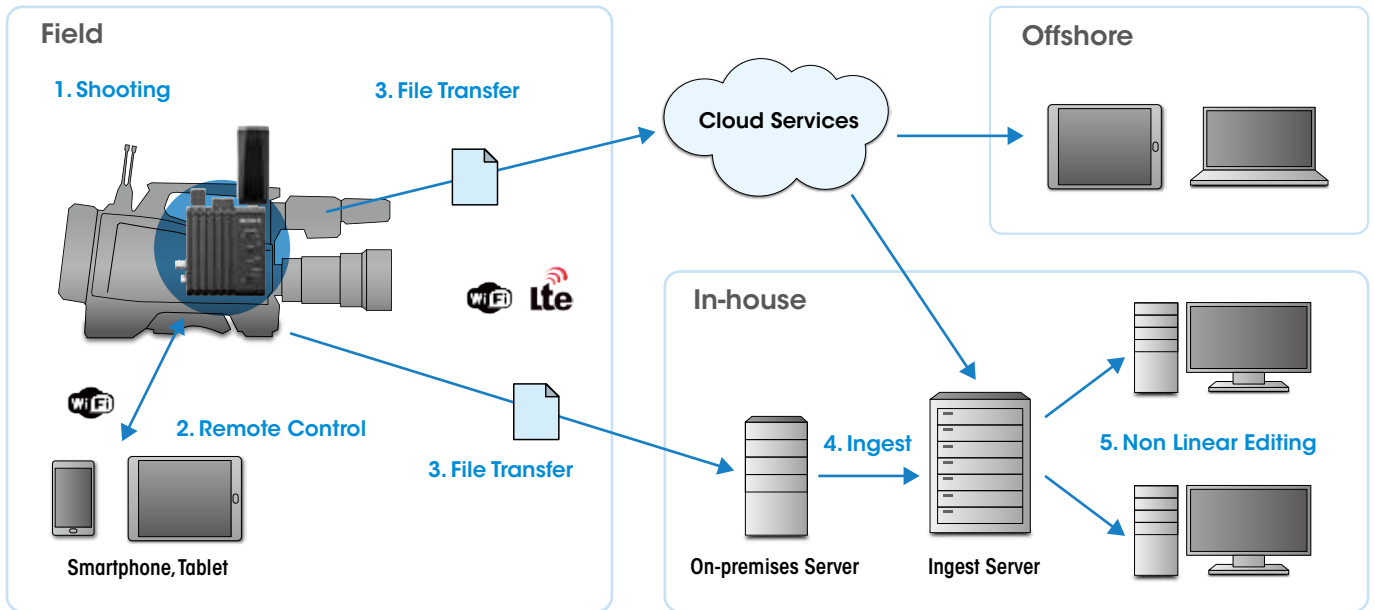
BP-U60T
Li-Ion Battery Pack with DC power output



IFU-WLM3
USB Wireless LAN Module

XAVC

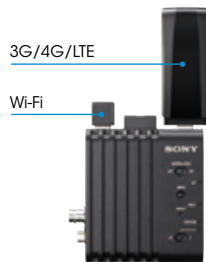
CBK-WA100 / CBK-WA101 Workflow



1. Shoot in field locations with wireless adapter/ camcorder installation

According to the shooting environment, attach a Wi-Fi*4 and/or 3G/4G/LTE*5 dongle to the wireless adapter*6. The adapter creates proxy data and stores this on an SD card for subsequent transmission.

- *4 The IFU-WLM3 Wi-Fi USB device is recommended.
- *5 Requires a third-party contract to transfer files (carrier availability varies in different countries/areas).
- *6 The file transfer function does not allow simultaneous use of Wi-Fi and 3G/4G/LTE devices.



3. Select file and upload

Recorded clips can be previewed on a mobile device. User can select proxy or high-resolution*11 file from the list and upload it to an on-premises server or to a cloud service via a mobile Wi-Fi router or 3G/4G/LTE device.

*11 A USB connection is required for high-resolution file transmission.



2. Connect to mobile devices using Wi-Fi

Users can connect the wireless adapter to a mobile device*7 using Wi-Fi. With the Content Browser Mobile*8 application, users can enjoy all of the features of the wireless adapter. For example, video streaming*9, browse file list, preview content, register metadata, change setting, select device, control camera*10, and trigger file transfer. Also, the wireless adapter itself has a web browser function for basic settings.

- *7 Supports Android (Version 4.1 and later). Some features are unavailable for iOS.
- *8 Content Browser Mobile is available in GooglePlay or iTunes.
- *9 Not available for iOS.
- *10 The camcorder and wireless adapter must be connected by USB.



Live Streaming



Camera Control

4. & 5. Ingest uploaded files from the field, and edit

Uploaded file can be ingested in a NLE. When multiple groups are working at the same time, it may be easier to share the content and edit the files via cloud services.

Distributed by

©2013 Sony Corporation. All rights reserved.
 Reproduction in whole or in part without written permission is prohibited.
 Features, design, and specifications are subject to change without notice.
 The values for mass and dimension are approximate.
 SONY is trademark of Sony Corporation.
 All other trademarks are the property of their respective owners.